

## INTRODUZIONE



# Pinete appenniniche artificiali a *Pinus nigra* spp. Semplificate MA Dinamiche & reattive se stimolate



### Età

- 45-75 anni

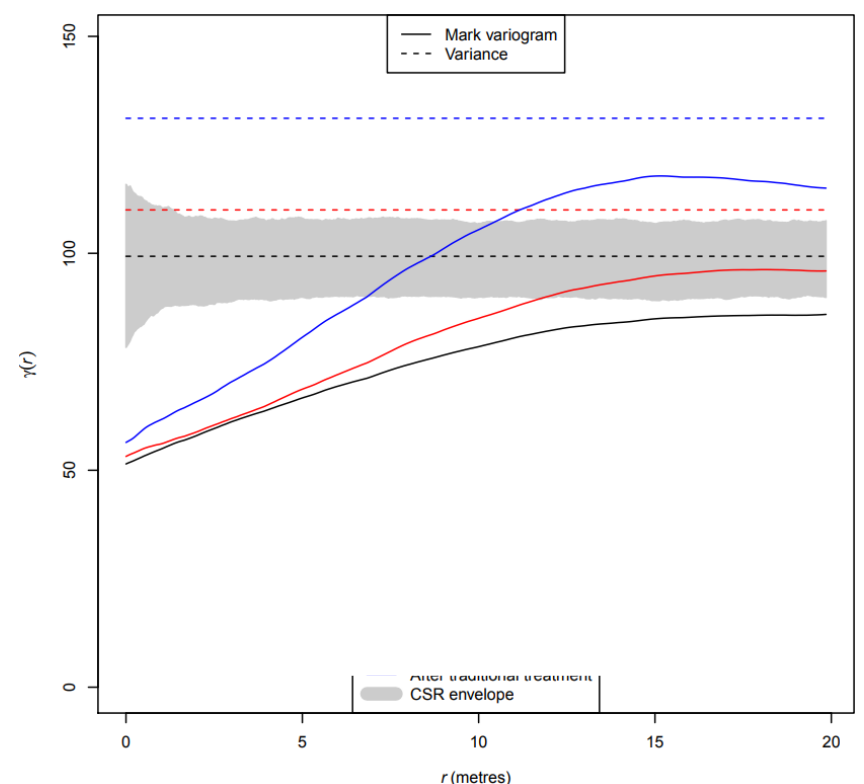
### Gestione attuale

- Diradamenti dal basso
- Diradamenti selettivi

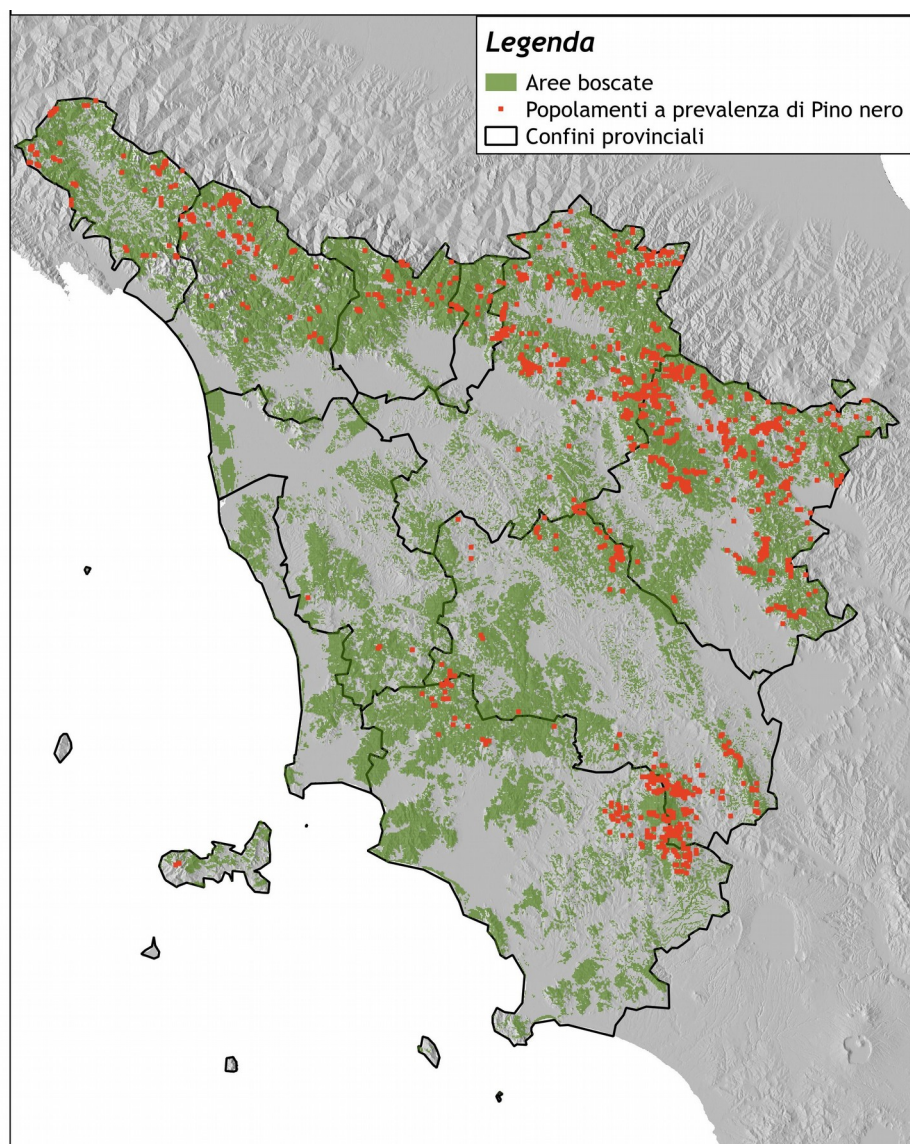
### Indici strutturali comuni e non

$$UAI_i = \frac{1}{k} \cdot \sum_{j=1}^k z_j$$

$$\frac{1}{n} \cdot \sum_i 1 - \frac{\min(DBHi, DBHj)}{\max(DBHi, DBHj)}$$







## Ipotesi di ricerca:

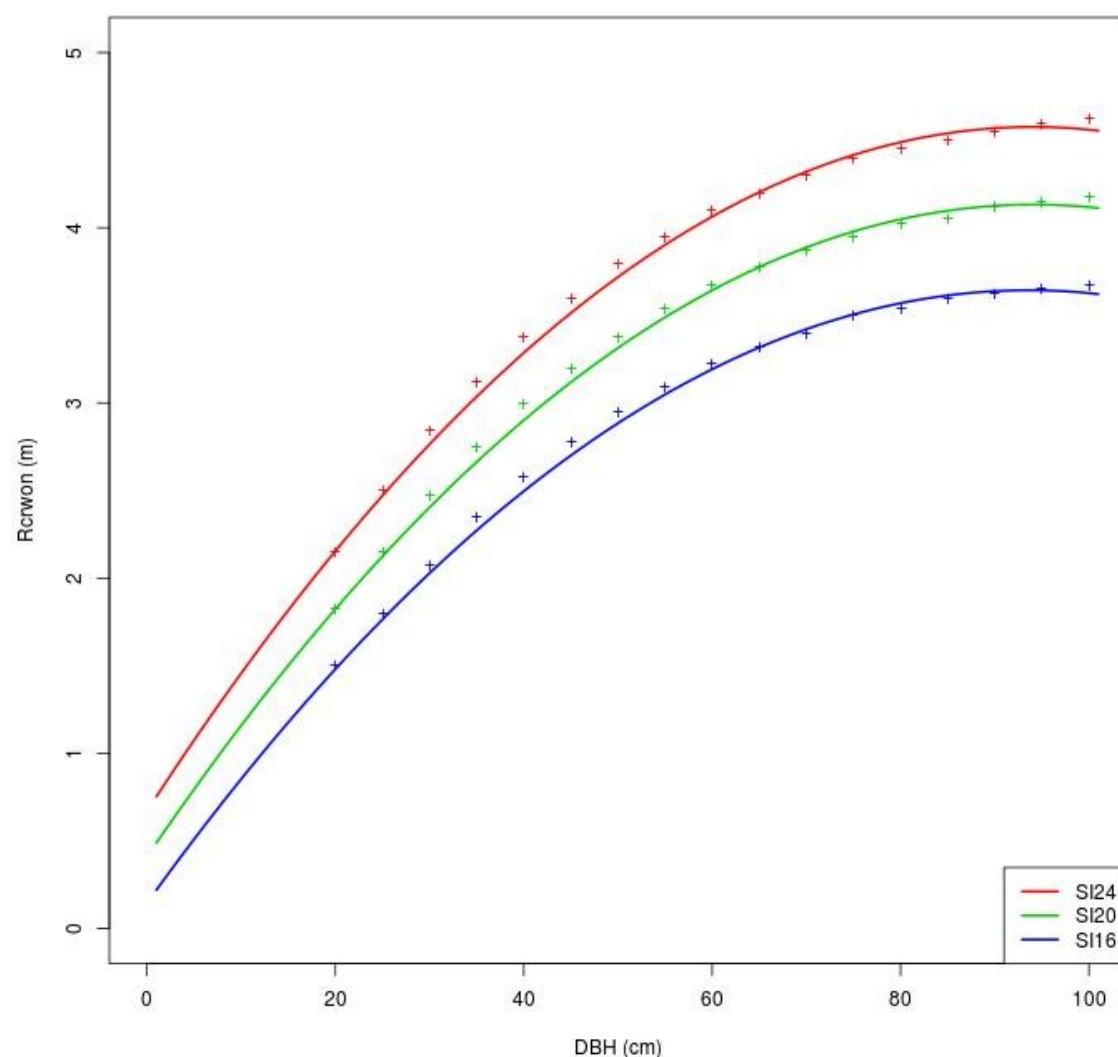
Relazione tra dbh e chioma potenziale (larghezza) per fornire un indice di competizione funzionale ad un diradamento di tipo selettivo

## Misurazioni

- Diametro 1,30 m
- Altezza totale
- Raggio massimo di chioma

*Piante a crescita "libera" lungo tutto l'arco appenninico della Toscana*

$$R_{crown} \sim dbh$$



## Validazione:

Database SelPiBio

CANTIANI P, MARCHI M (2017). *A spatial dataset of forest mensuration collected in black pine plantations in central Italy*. Annals of Forest Science 74:50. doi: <http://dx.doi.org/10.1007/s13595-017-0648-8>

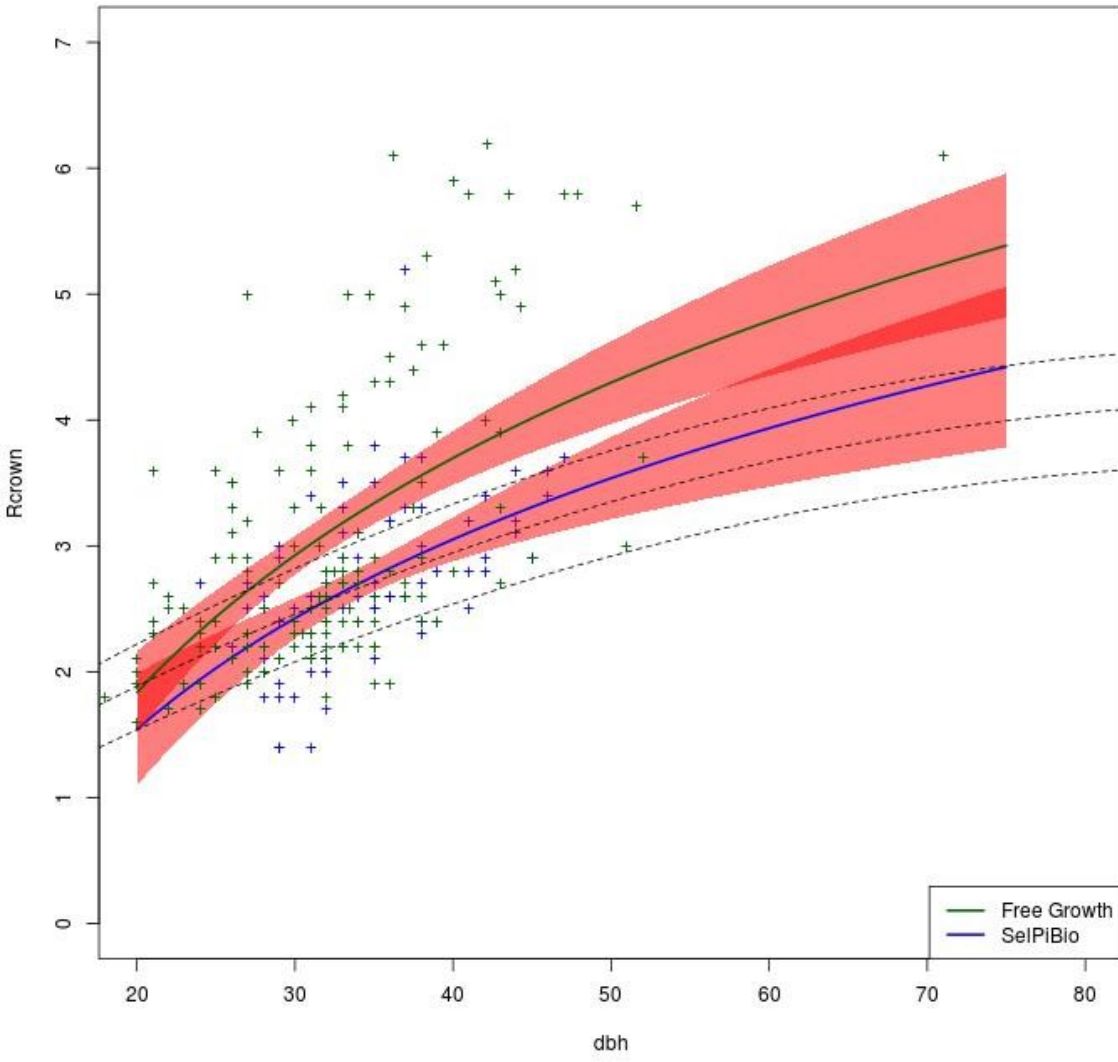
→ contributo #c11.20.9 – Sessione Poster 01

Cantiani P, Marchi M: *The SelPiBio database, a spatial tree-level and open-access dataset for black pine plantations in central Italy*

From diameters to crown volumes: a competition index for selection of candidate trees in silvicultural practices

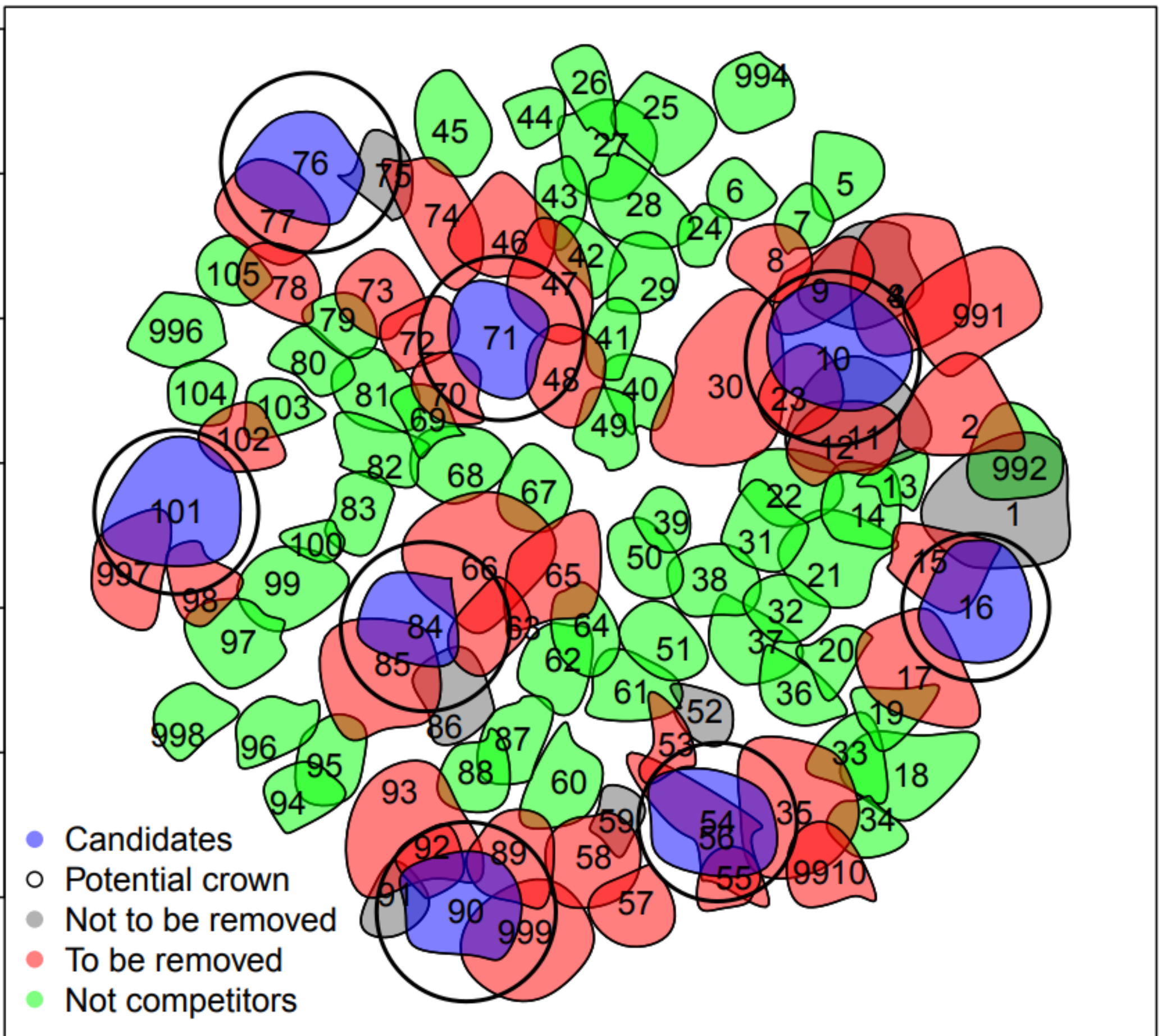
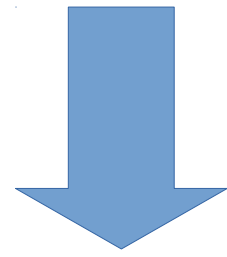
Marchi | Plutino | Cantiani





Due modelli nettamente diversi e differenti da quelli delle tavole

95% delle piante diradate



From diameters to crown volumes: a competition index for selection of candidate trees in silvicultural practices

Marchi | Plutino | Cantiani